

CSAS 2018/017 Figure 25

Terms of Use

As a courtesy to fellow scientists, please e-mail Dr. Catherine Johnson (Catherine.Johnson@df-mpo.gc.ca) to indicate how you are using these data so that efforts are not duplicated. Comments and suggestions are also welcome.

The data provided here can be redistributed and/or modified under the terms of the Government of Canada Open Data License Agreement as published on <http://open.canada.ca/en/open-government-licence-canada> in its current version, or any subsequent version.

The data are licensed “as is”. Fisheries and Oceans Canada makes no representation and gives no warranty whatsoever with respect to the data and expressly disclaims any implied warranty of merchantability or fitness for a particular purpose of the data. Fisheries and Oceans Canada assumes no obligation or liability whatsoever for the provision of updates to the Data. See the Government of Canada Open Data License Agreement at <http://open.canada.ca/en/open-government-licence-canada> for details.

Citation

It is suggested that data users cite the DFO Canadian Science Advisory Secretariat (CSAS) research documents as specified within the “Foreword” of the associated report body:

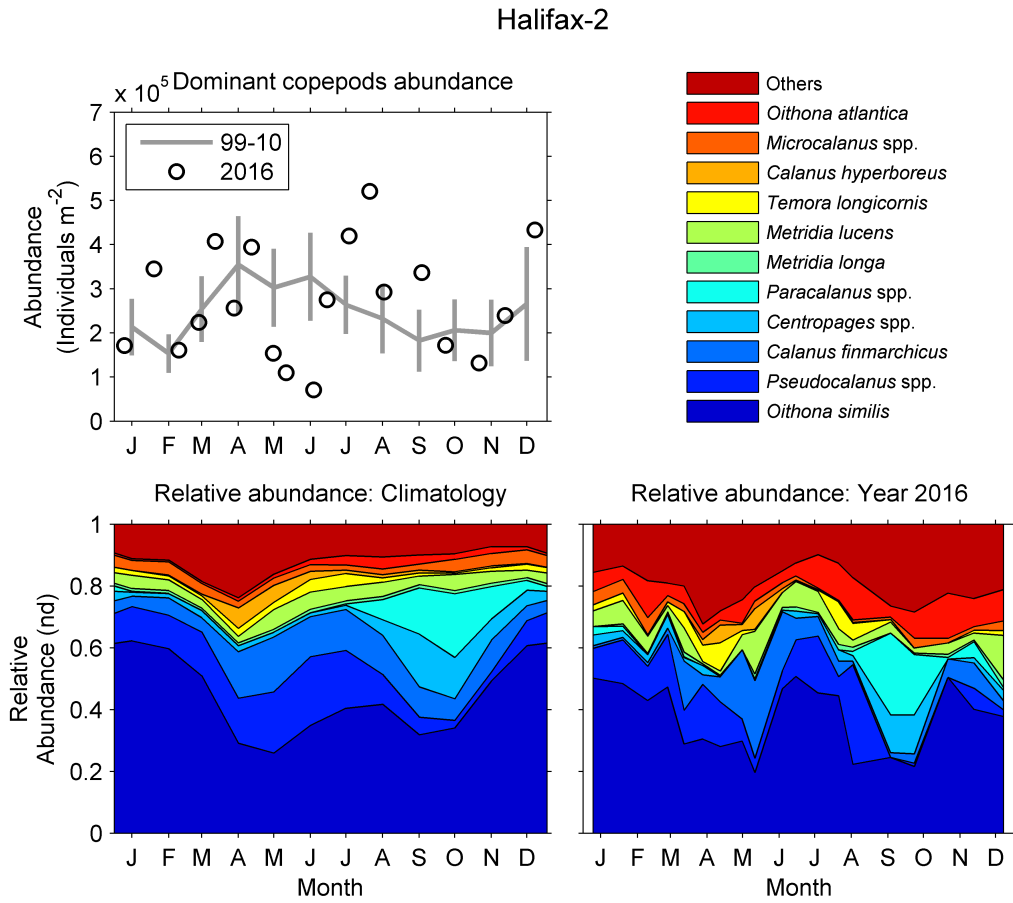
Johnson, C., Devred, E., Casault, B., Head, E., and Spry, J. 2018. Optical, Chemical, and Biological Oceanographic Conditions on the Scotian Shelf and in the Eastern Gulf of Maine in 2016. DFO Can. Sci. Advis. Sec. Res. Doc. 2018/017. v + 57 p.

Contact

For questions concerning the data provided, please contact:

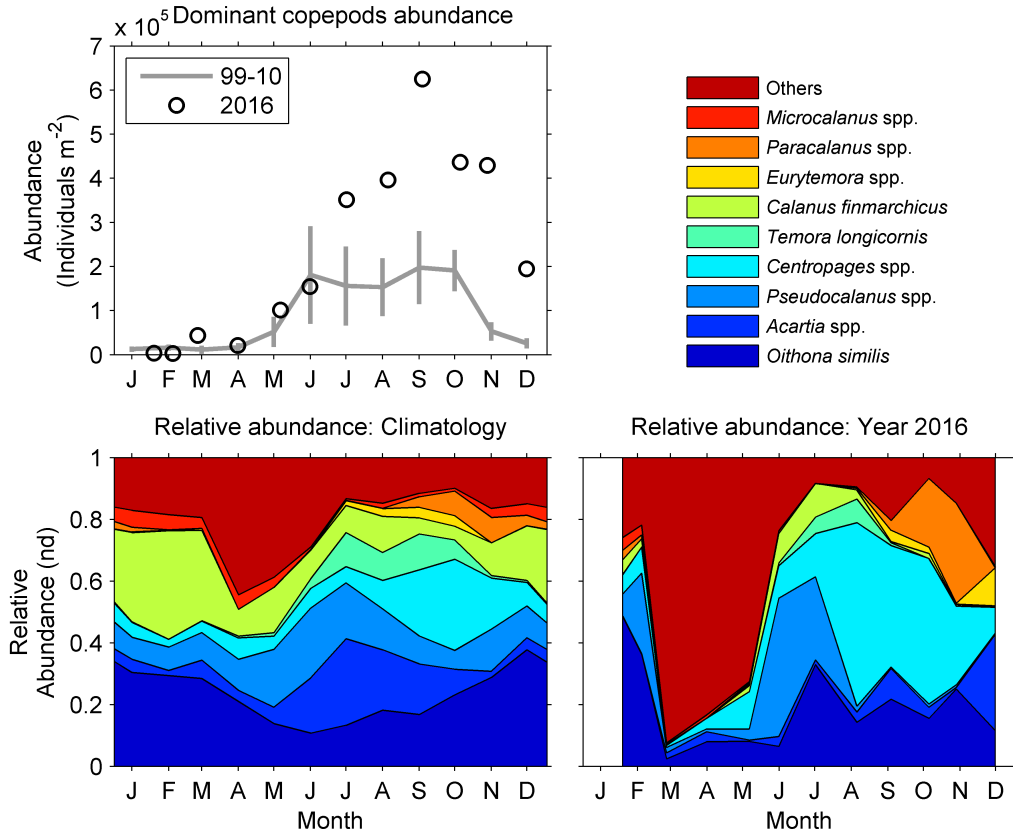
Dr. Catherine Johnson
Fisheries and Oceans Canada
Bedford Institute of Oceanography
P.O. Box 1006, 1 Challenger Dr.
Dartmouth, N.S. Canada B2Y 4A2
Tel: 902-426-0753
Email: Catherine.Johnson@df-mpo.gc.ca

Figure



Seasonal variability of dominant copepods at Halifax-2. The top 95% of identified copepod taxa by abundance, 1999-2010, are shown individually; others, including unidentified copepods (mostly nauplii) are grouped as “others.” Upper left panel: copepod abundance in 2016 (open circle) and mean conditions, 1999–2010 (solid line). Vertical lines are 95% confidence intervals of the monthly means. Lower left panel: Climatology of copepod relative abundances, 1999–2010. Lower right panel: copepod relative abundance in 2016. nd = no dimensions.

Prince-5



Seasonal variability of dominant copepods at Prince-5. The top 95% of identified copepod taxa by abundance, 1999-2010, are shown individually; others, including unidentified copepods (mostly nauplii) are grouped as “others.” Upper left panel: copepod abundance in 2016 (open circle) and mean conditions, 1999–2010 (solid line). Vertical lines are 95% confidence intervals of the monthly means. Lower left panel: Climatology of copepod relative abundances, 1999–2010. Lower right panel: copepod relative abundances in 2016. nd = no dimensions.

Data

Time series

The dominant copepods abundance data used to plot Figure 25 are available here for [HL2](#) and [P5](#) fixed stations.

Climatology

The dominant copepods abundance climatology data used to plot Figure 25 are available here for [HL2](#) and [P5](#) fixed stations.