

CSAS 2018/017 Figure 16

Terms of Use

As a courtesy to fellow scientists, please e-mail Dr. Catherine Johnson (Catherine.Johnson@df-mpo.gc.ca) to indicate how you are using these data so that efforts are not duplicated. Comments and suggestions are also welcome.

The data provided here can be redistributed and/or modified under the terms of the Government of Canada Open Data License Agreement as published on <http://open.canada.ca/en/open-government-licence-canada> in its current version, or any subsequent version.

The data are licensed “as is”. Fisheries and Oceans Canada makes no representation and gives no warranty whatsoever with respect to the data and expressly disclaims any implied warranty of merchantability or fitness for a particular purpose of the data. Fisheries and Oceans Canada assumes no obligation or liability whatsoever for the provision of updates to the Data. See the Government of Canada Open Data License Agreement at <http://open.canada.ca/en/open-government-licence-canada> for details.

Citation

It is suggested that data users cite the DFO Canadian Science Advisory Secretariat (CSAS) research documents as specified within the “Foreword” of the associated report body:

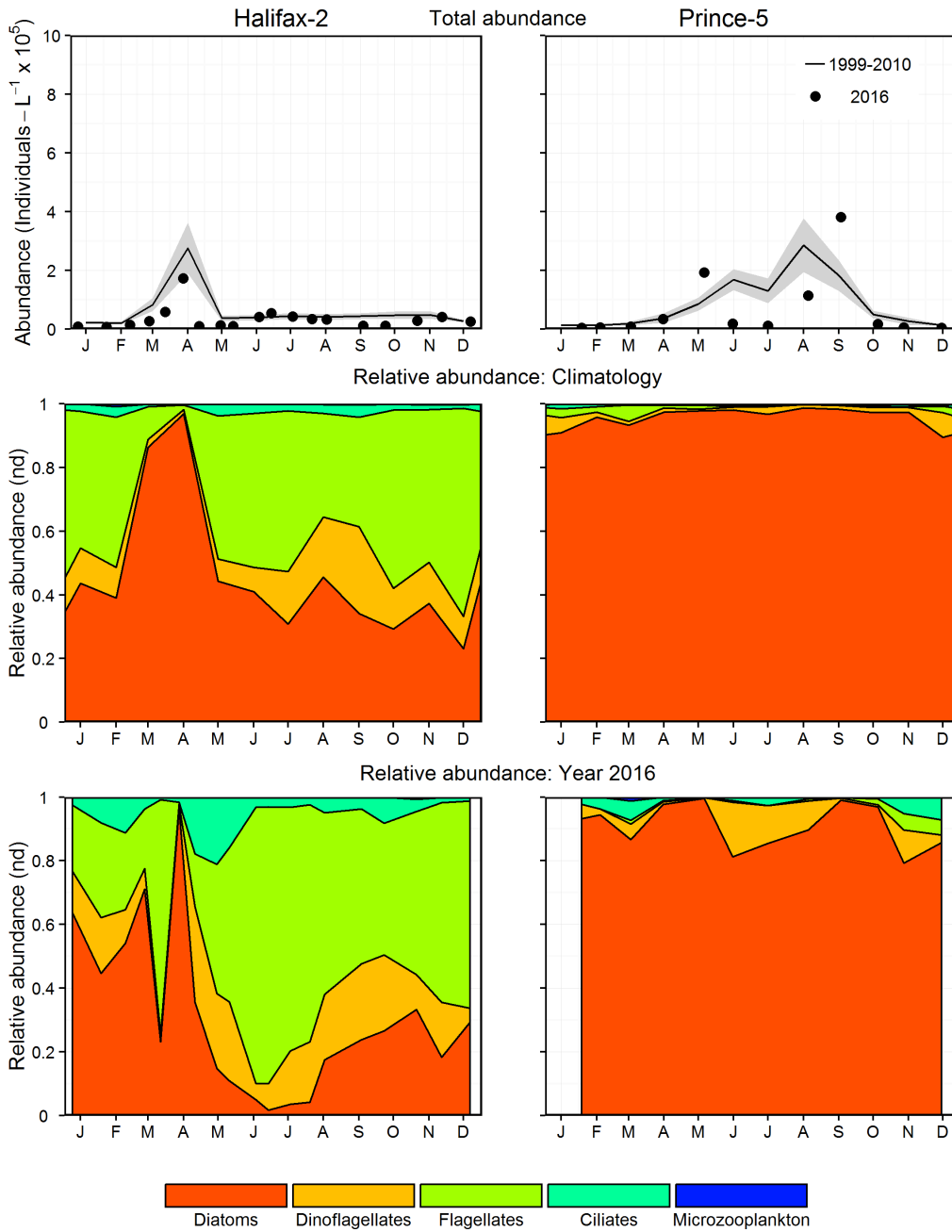
Johnson, C., Devred, E., Casault, B., Head, E., and Spry, J. 2018. Optical, Chemical, and Biological Oceanographic Conditions on the Scotian Shelf and in the Eastern Gulf of Maine in 2016. DFO Can. Sci. Advis. Sec. Res. Doc. 2018/017. v + 57 p.

Contact

For questions concerning the data provided, please contact:

Dr. Catherine Johnson
Fisheries and Oceans Canada
Bedford Institute of Oceanography
P.O. Box 1006, 1 Challenger Dr.
Dartmouth, N.S. Canada B2Y 4A2
Tel: 902-426-0753
Email: Catherine.Johnson@df-mpo.gc.ca

Figure



Comparison of 2016 microplankton (phytoplankton and protists) abundance and community composition with mean conditions from 1999-2010 at the Maritimes fixed stations (Halifax-2 right panels; Prince-5 left panels). Upper panels: 2016 microplankton abundance (open circle) and mean conditions from 1999-2010 (solid line). Vertical lines are 95% confidence intervals of the monthly means. Middle panels: Climatological microplankton relative abundance from 1999-2010. Lower panels: 2016 microplankton relative abundance. nd = no dimensions.

Data

Time series

The microplankton abundance data used to plot Figure 16 are available here for [HL2](#) and [P5](#) fixed stations.

Climatology

The total microplankton abundance climatology data used to plot Figure 16 are available here for [HL2](#) and [P5](#) fixed stations.